



**Gren Motor**

BLDC MOTOR MANUFACTURER

# BLDC MOTORS

product catalog



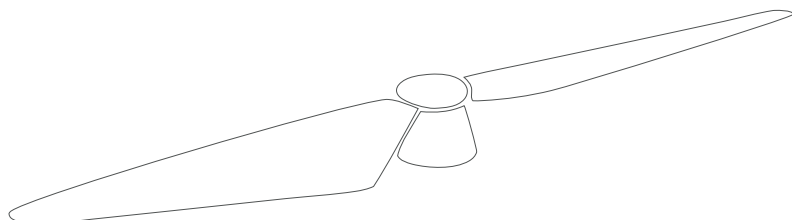
This product catalog presents BLDC motors from Gren Motor



**BLDC MOTOR MODEL:**

**GrM-10-8048**

**Installation:** propellers - 16mm



# BLDC MOTOR

BLDC motor model: GrM-3115

BLDC MOTOR MODEL:

## GrM-3115

Model intended for FPV Drone

Dimensions: height - 30 mm / diameter - 37 mm

Power supply: 3S



\* Colors, dimensions (height, width), motor mounting holes, and propeller mounts are individually determined at the ordering stage, ensuring the product is fully tailored to the customer's needs.

\* The engine is made of composite, which reduces the weight of the product



BLDC motor model: GrM-7912

BLDC MOTOR MODEL:

## GrM-7912

Model intended for FPV Drone

Dimensions: height - 25 mm / diameter - 86 mm

Power supply: 6S KV110



\* Colors, dimensions (height, width), motor mounting holes, and propeller mounts are individually determined at the ordering stage, ensuring the product is fully tailored to the customer's needs.

\* The engine is made of composite, which reduces the weight of the product





# BLDC MOTOR



**Gren Motor**

BLDC MOTOR MANUFACTURER



BLDC motor model: GrM-03-1035

BLDC MOTOR MODEL:

## GrM-02-1035

along with electronics

Intended for ventilation

Dimensions: height - 80 mm / diameter - 37 mm

Control: 0-10 V

Power supply: 230 V

\* Colors, dimensions (height, width), motor mounting holes, and propeller mounts are individually determined at the ordering stage, ensuring the product is fully tailored to the customer's needs.

\* The engine is made of composite, which reduces the weight of the product



BLDC motor model: GrM-06-4294

BLDC MOTOR MODEL:

## GrM-06-4294

Model intended for robotics

Dimensions: height - 103 mm / diameter - 160 mm

Power supply: 6S KV110

\* Colors, dimensions (height, width), motor mounting holes, and propeller mounts are individually determined at the ordering stage, ensuring the product is fully tailored to the customer's needs.

\* The engine is made of composite, which reduces the weight of the product



# BLDC MOTOR



**Gren Motor**

BLDC MOTOR MANUFACTURER



BLDC motor model: GrM-08-3530 KV860

BLDC MOTOR MODEL:

## GrM-08-3530 KV860

Model intended for aircraft

Dimensions: height - 56 mm / diameter - 45 mm

Power supply: 6S

\* Colors, dimensions (height, width), motor mounting holes, and propeller mounts are individually determined at the ordering stage, ensuring the product is fully tailored to the customer's needs.

\* The engine is made of composite, which reduces the weight of the product



BLDC motor model: GrM-09-6530 KV550

BLDC MOTOR MODEL:

## GrM-08A-6530 KV860

Model intended for aircraft

Dimensions: height - 56 mm / diameter - 45 mm

Power supply: 6S

\* Colors, dimensions (height, width), motor mounting holes, and propeller mounts are individually determined at the ordering stage, ensuring the product is fully tailored to the customer's needs.

\* The engine is made of composite, which reduces the weight of the product



# BLDC MOTOR



**Gren Motor**

BLDC MOTOR MANUFACTURER



BLDC motor model: GrM-03-6516

BLDC MOTOR MODEL:

## GrM-03-6516

Intended for ventilation

Dimensions: height - 75 mm / diameter - 90 mm

Control: 0-10 V

Power supply: 230 V

Power: 0 - 90 W

\* Colors, dimensions (height, width), motor mounting holes, and propeller mounts are individually determined at the ordering stage, ensuring the product is fully tailored to the customer's needs.

\* The engine is made of composite, which reduces the weight of the product



BLDC motor model: GrM-04-6525

BLDC MOTOR MODEL:

## GrM-04-6525

Intended for ventilation

Dimensions: height - 1105 mm / diameter - 113 mm

Control: 0-10 V

Power supply: 230 V

Power: 0 - 140 W

\* Colors, dimensions (height, width), motor mounting holes, and propeller mounts are individually determined at the ordering stage, ensuring the product is fully tailored to the customer's needs.

\* The engine is made of composite, which reduces the weight of the product



# BLDC MOTOR

BLDC motor model: GrM-12-4130

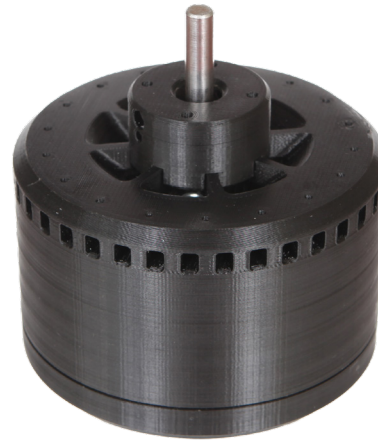
BLDC MOTOR MODEL:

## GrM-10-8048 drone

Dimensions: height - 88 mm / diameter - 110 mm

\* Colors, dimensions (height, width), motor mounting holes, and propeller mounts are individually determined at the ordering stage, ensuring the product is fully tailored to the customer's needs.

\* The engine is made of composite, which reduces the weight of the product



BLDC motor model: GrM-12-4130 - aircraft

BLDC MOTOR MODEL:

## GrM-09-6530 KV550

Model intended for drones

Dimensions: height - 63 mm / diameter - 77 mm

Power supply: 6S

\* Colors, dimensions (height, width), motor mounting holes, and propeller mounts are individually determined at the ordering stage, ensuring the product is fully tailored to the customer's needs.

\* The engine is made of composite, which reduces the weight of the product



## BLDC MOTOR



BLDC motor model: GrM-15-8020-ROB

BLDC MOTOR MODEL:

### GrM-15-8020-ROB KV120

**Dimensions:** height - 70 mm / diameter - 105 mm

**With planetary gear 1:10**



\* Colors, dimensions (height, width), motor mounting holes, and propeller mounts are individually determined at the ordering stage, ensuring the product is fully tailored to the customer's needs.

\* The engine is made of composite, which reduces the weight of the product



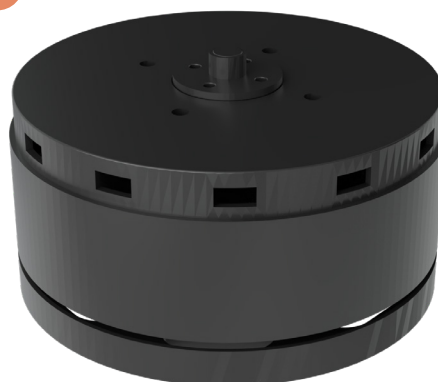
BLDC motor model: GrM-17-11122-AGRO

BLDC MOTOR MODEL:

### GrM-17-11122-AGRO KV50

**Dimensions:** height - 65 mm / diameter - 117 mm

**Power supply:** 18S



\* Colors, dimensions (height, width), motor mounting holes, and propeller mounts are individually determined at the ordering stage, ensuring the product is fully tailored to the customer's needs.

\* The engine is made of composite, which reduces the weight of the product





# BLDC MOTOR



BLDC MOTOR MANUFACTURER



**BLDC motor model: GrM-12-4130**

### BLDC MOTOR MODEL:

# GrM-12-4130

aircraft



**Dimensions:** height - 55.4 mm / diameter - 49.5 mm

**Installation:** propellers - 16mm

**Possibility of making:** KV290 / KV375 / KV470

\* Colors, dimensions (height, width), motor mounting holes, and propeller mounts are individually determined at the ordering stage, ensuring the product is fully tailored to the customer's needs.

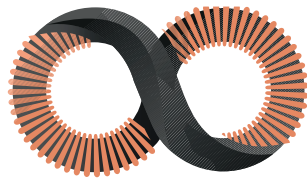
\* The engine is made of composite, which reduces the weight of the product



### Notes:

## Notes:

This image shows a single sheet of white paper with horizontal dashed lines, typical of primary-ruled notebook paper. The lines are evenly spaced and run across the width of the page. There are no margins, text, or other markings on the paper.



# Gren Motor

BLDC MOTOR MANUFACTURER

